

Supplement — 1985 Model

This "Supplement — 1985 Model" chapter is designed to be used in conjunction with the front part of this manual (up to the end of the "Appendix" chapter). The maintenance and repair procedures described in this chapter are only those that are unique to the 1985 KR250-A2 motorcycle. Most service operations for these models remain identical to those described in front of this chapter. Complete and proper servicing of the 1985 KR250-A2 motorcycle, therefore requires mechanics to read both this chapter and the text in front of this chapter.

Table of Contents

Clutch	17-2
Clutch	17-2
Primary Gear Assembly	17-2
Primary Gear Damper Inspection	17-3
Crankshaft/Transmission	17-4
Exploded View	17-4

Clutch

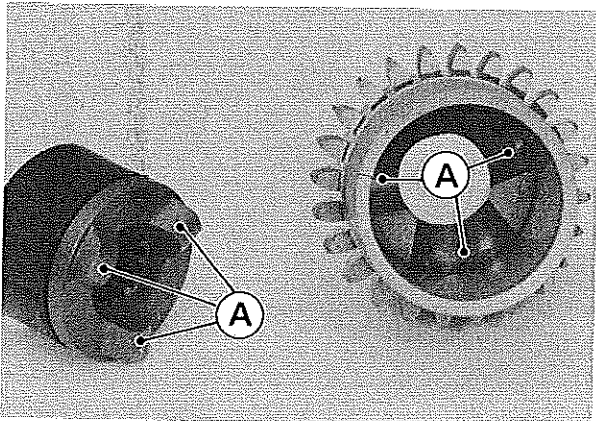
Clutch

The following procedures are only those that are unique to the KR250-A2 model. For all other procedures refer to the front of this manual.

Primary Gear Assembly

The parts installation order of the primary gear assembly is changed on the KR250-A2.

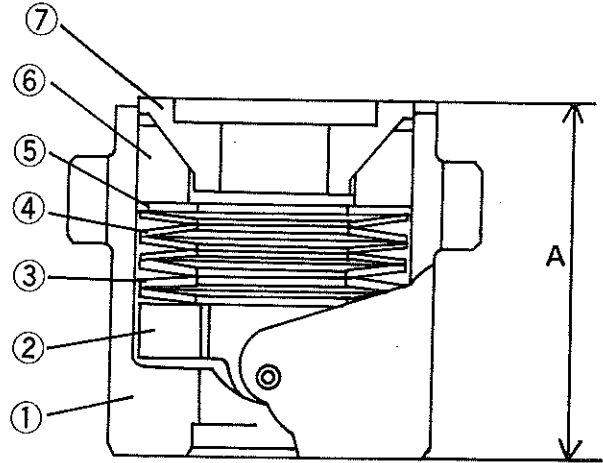
- Apply a molybdenum disulfide engine assembly grease to the cam surfaces of the damper cams and primary gears.



A. Cam Surfaces

- Select the washers using the following steps in order to keep the variation in the damper spring load at minimum.
- First, insert a washer **1.0 mm** thick and place the shoes, and the retainer in this order, being careful of the installation direction.

Washer Selection



- | | |
|-------------------------|-------------|
| 1. Primary Gear | 5. Washer |
| 2. Damper Cam | 6. Shoes |
| 3. Thick Damper Springs | 7. Retainer |
| 4. Thin Damper Springs | |

○ Next, measure the dimension A.

Dimension A

Standard: **51.9 – 52.3 mm**

○ Finally, select washers according to the table below and install them.

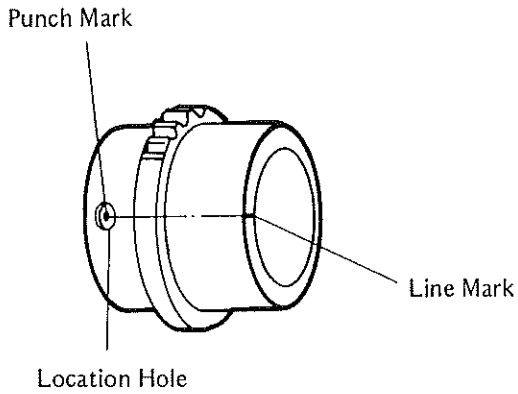
Washer Selection

Dimension A not less than – less than	Thickness and Nos.
52.3 – 53.0 mm	0.8 mm
51.9 – 52.3 mm	1.0 mm
51.7 – 51.9 mm	1.2 mm
51.5 – 51.7 mm	1.4 mm
51.3 – 51.5 mm	0.8 mm x 2
51.1 – 51.3 mm	0.8 mm + 1.0 mm
50.9 – 51.1 mm	1.0 mm x 2

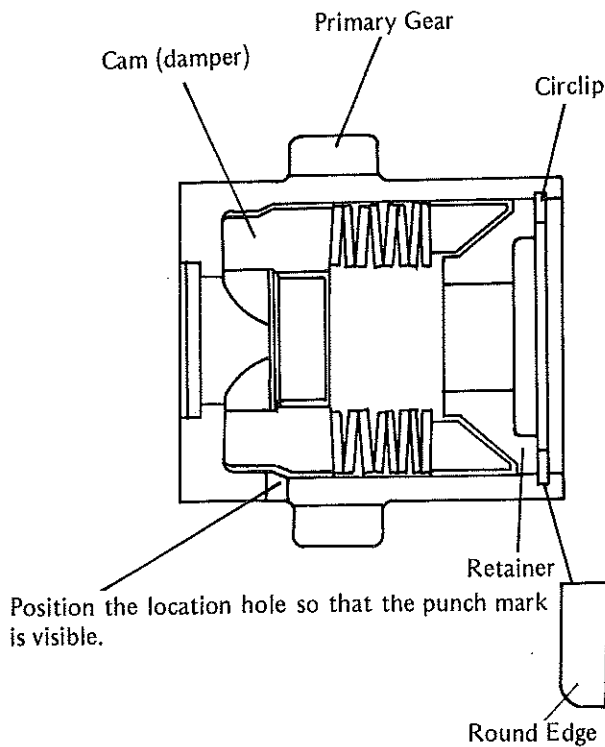
Washer Part Nos.

t0.8 mm	92022-1734
t1.0 mm	92022-1735
t1.2 mm	92022-1736
t1.4 mm	92022-1764

- Align the damper cam punch mark with one of the primary gear holes spaced equally routed circumference.
- Select a locating hole on the extension of the line mark from among the holes.



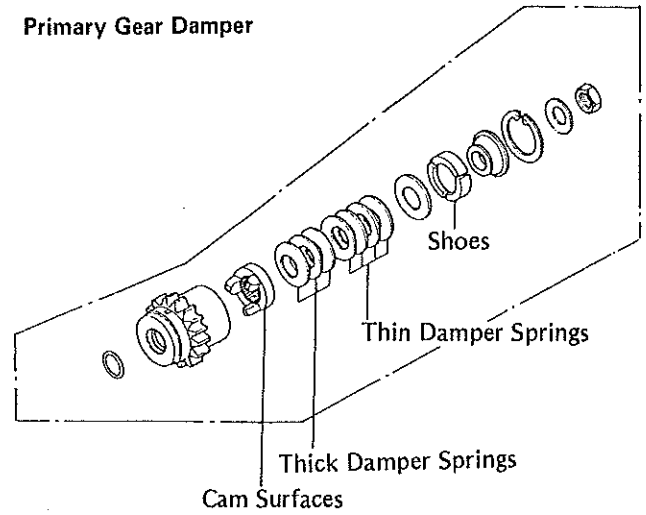
- Install the circlip with the round edge faces in to prevent the circlip from slipping out.
- Fit a new circlip into the groove, while pushing the retainer only enough to install the circlip and no more.



Primary Gear Damper Inspection

- Visually inspect the cam surfaces of the primary gears and the damper cams.
- ★ If they are badly worn, replace the primary gears and the damper cams.
- Visually inspect the damper springs for cracks or other damage.
- ★ If they are damaged, replace them with new ones.
- Visually inspect the damper shoes.
- ★ If the abnormal wear or the exposed base metal is found, replace all the damper shoes.

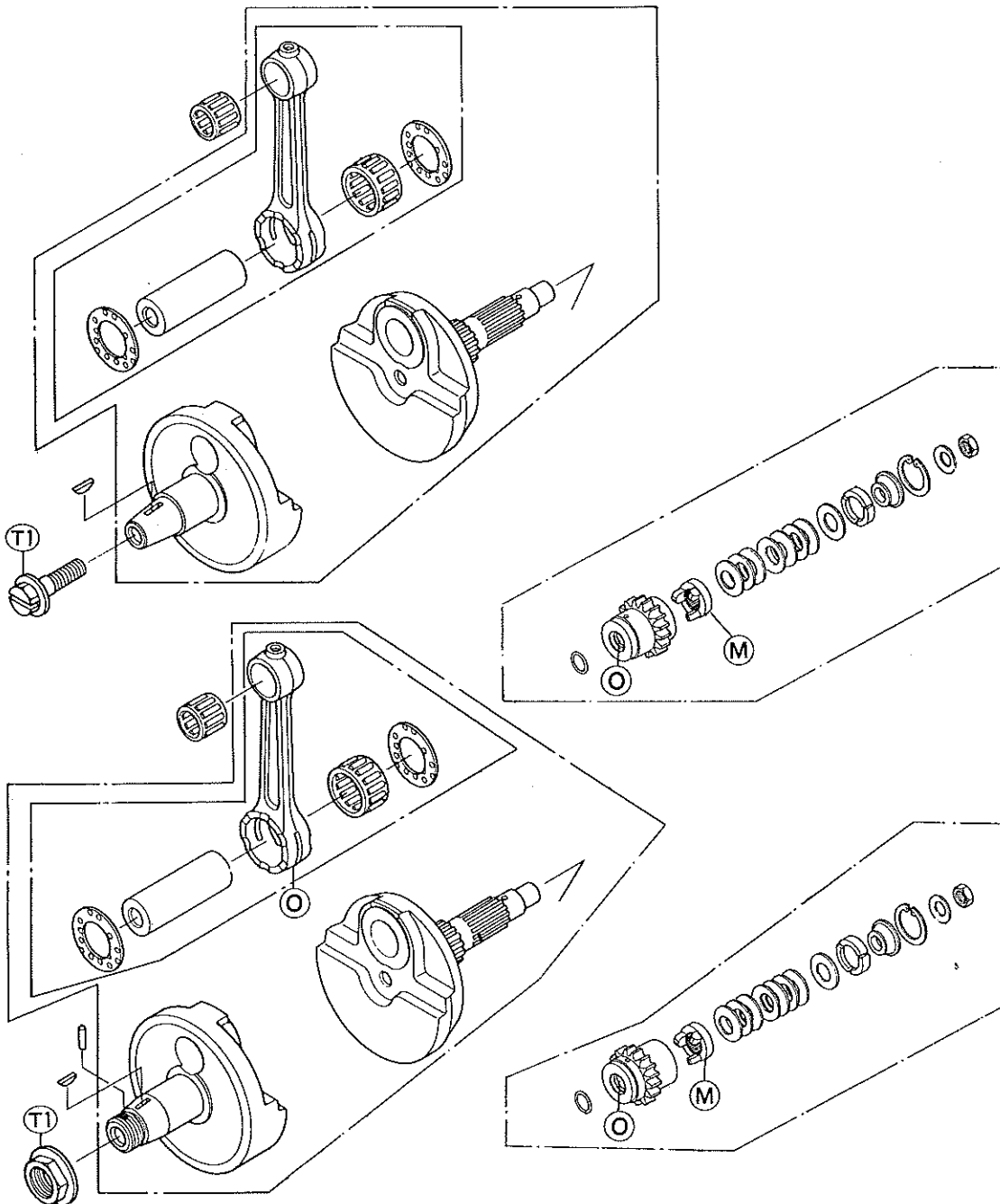
Primary Gear Damper



Crankshaft/Transmission

.....
Exploded View
.....

The following informations are only those that are unique to the KR250-A2 model. For all other data refer to the front part of this manual.



T1: 64 – 74 N-m (6.5 – 7.5 kg-m, 47 – 54 ft-lb)
M : Apply a molybdenum disulfide grease.
O : Apply engine oil at installation.

MODEL APPLICATION

Year	Model	Beginning Frame No.
1984	KR250-A1	KR250A-000001
1985	KR250-A2	KR250A-011201

KAWASAKI
HEAVY INDUSTRIES, LTD.
CONSUMER PRODUCTS GROUP

Part No. 99924-1053-02

Printed in Japan