

Engine Removal/Installation

Table of Contents

7

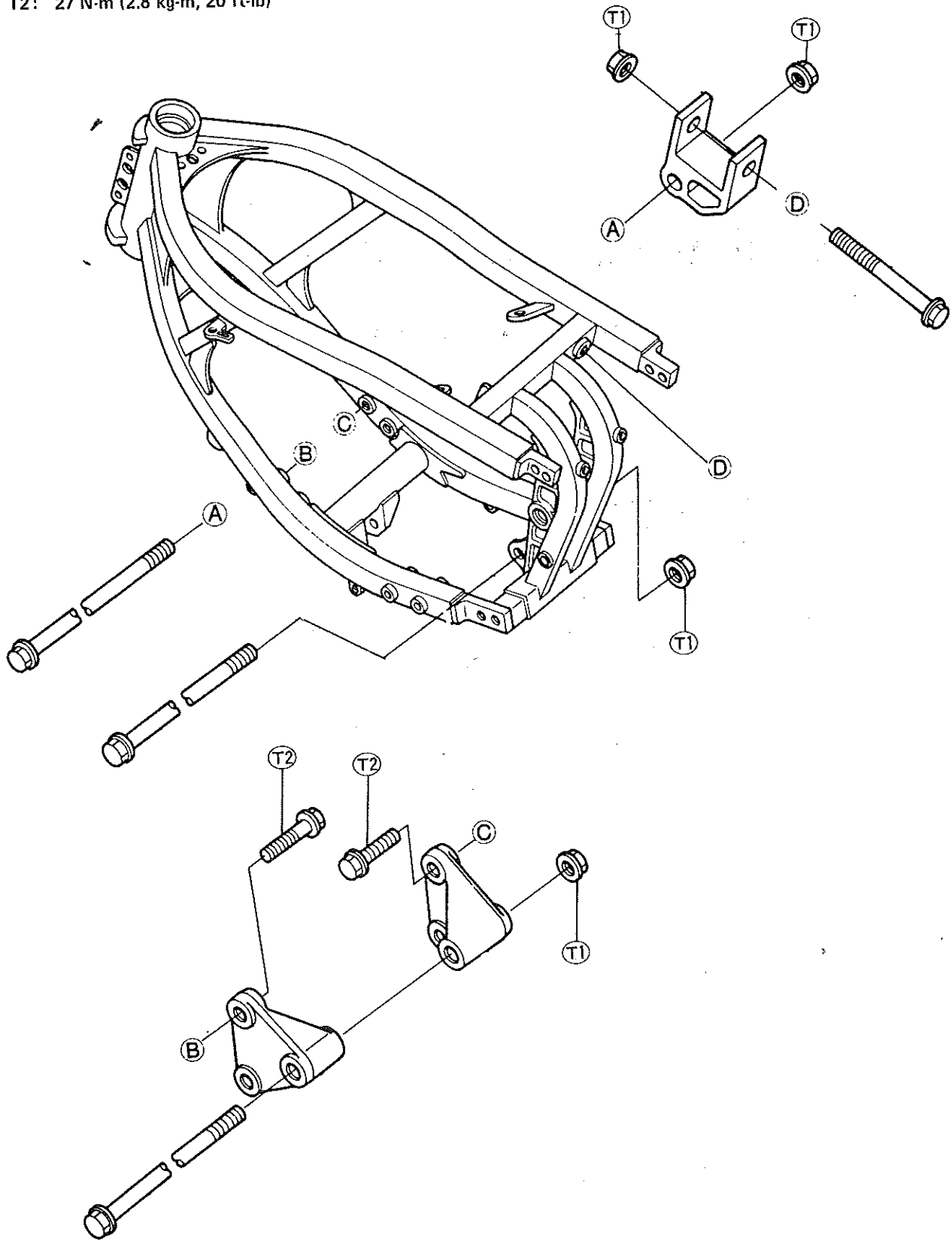
Engine Removal/Installation	
<i>Exploded View</i>	7-2
<i>Engine Removal</i>	7-3
<i>Engine Installation</i>	7-3

7-2 ENGINE REMOVAL/INSTALLATION

Exploded View

T1: 39 N-m (4.0 kg-m, 29 ft-lb)

T2: 27 N-m (2.8 kg-m, 20 ft-lb)

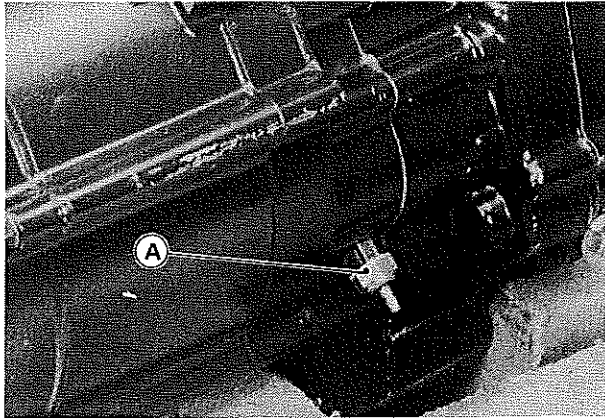


Engine Removal/Installation

Engine Removal

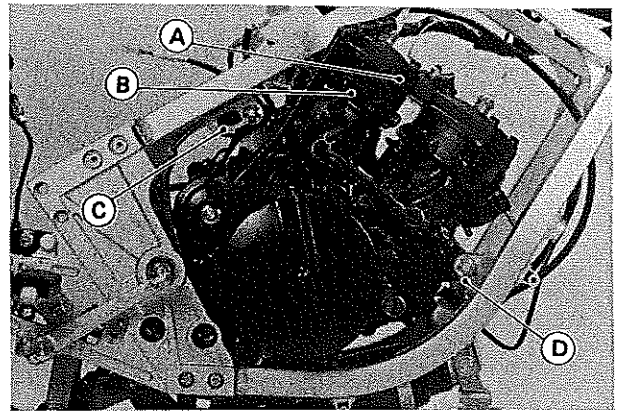
- Set the motorcycle up its side stand so that it is stable during removal and installation.
- For later installation convenience, note and record how and where cables, wirings, and hoses are routed. They should not be bent sharply, kinked, or twisted.
- Drain the transmission oil (see Transmission Oil Change in Engine Lubrication System).
- Drain the coolant (see Coolant Draining in Cooling System). To avoid burns, wait until the coolant cools down.

- Remove the neutral switch at the engine bottom to prevent its damage.



A. Neutral Switch

- Remove the following parts.
 - Fairing (see, Frame).
 - Seat
 - Fuel tank (see Fuel System).
 - Radiator (with horn), radiator hoses, reservoir tank (see Cooling System).
 - Air cleaner housing and ducts (see Fuel System).
 - Front muffler (see Engine Top End).
 - Shift pedal
 - Engine sprocket (see Final Drive).
 - Clutch cable (see Clutch).
 - Throttle control cable, choke cable and oil pump cable (see Fuel System, Engine Lubrication System).
- Remove the cylinder head and the rear cylinder (see Engine Top End).
- Remove the engine mounting bolts and brackets starting with top to bottom.



A. Cylinder Head
B. Rear Cylinder

C. Upper Mounting Brackets
D. Lower Mounting Brackets

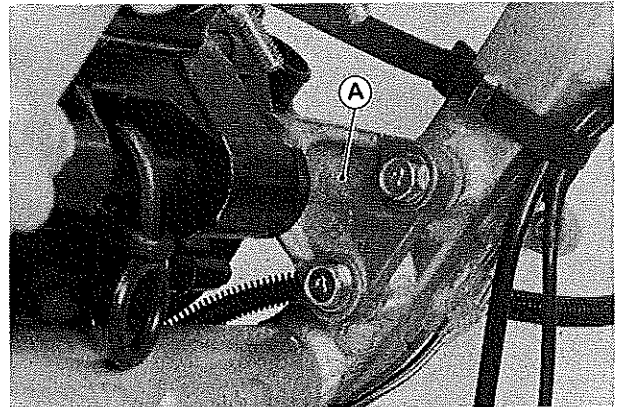
NOTE

- Remove the cylinder head and the rear cylinder for removal convenience.

- Take out the engine unit from the vehicle right side; opposite the side stand.

Engine Installation

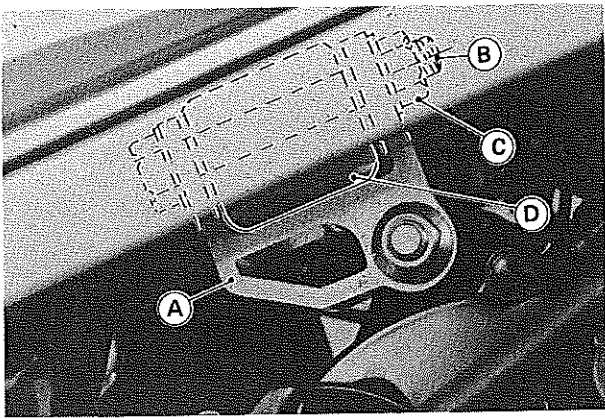
- Install the lower mounting brackets in advance.



A. Lower Mounting Brackets (left and right)

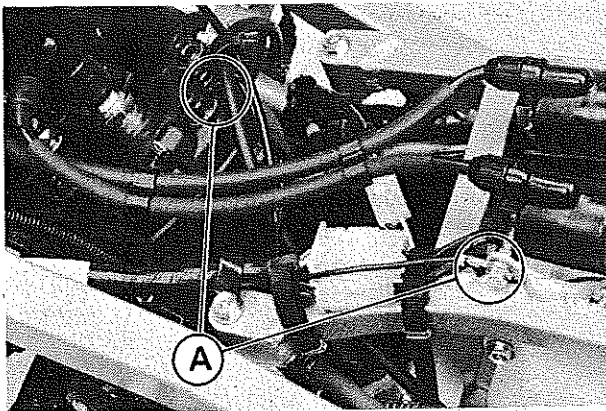
- Mount the engine unit with the cylinder head and rear cylinder removed.
- Temporarily install the engine mounting bolts and nuts. The upper bracket nut is on top as shown.
- Tighten the upper bracket nut to the specified torque so that the upper bracket makes contact with the frame crosspipe.

7-4 ENGINE REMOVAL/INSTALLATION



A. Upper Bracket
B. Mounting Bolt
C. Mounting Nut
D. Crosspipe

- Tighten other mounting bolts and nuts to the specified torque.
- Install the neutral switch. Always replace the gasket with new one, if it is damaged.
- Be sure to install the main harness ground (-) leads on the cylinder head and the ignition coil bracket.



A. Main Harness Ground Lead

- Be sure to route the following cables, wires and tubes to avoid their being burned by the mufflers.
 - Carburetor vent tubes, overflow tubes and crankcase breather tube (see Fuel System).
 - Fuel tank breather tubes (see Fuel System).
 - Oil tank breather tube and oil pump cable (see Engine Lubrication System).
 - Spark plug leads and main harness (see Engine Top End).
- Fill the transmission with transmission oil.
- Fill the cooling system with coolant.
- Adjust the following parts.
 - Drive chain
 - Clutch cable
 - Choke cable
 - Throttle cable and carburetor cable (idle speed).
 - Oil pump cable
- Bleed air in the cooling system and the oil pump.